



## Quick, Efficient Controller Setup with Data-Logging Capabilities

**Searching for a quick, efficient way to set up your controllers? Need rapid data-logging and graphing capabilities? We have the answer: WATVIEW™.**

WATVIEW is Watlow Anafaze's new HMI (Human/Machine Interface) software designed to set up and monitor controllers from Watlow Controls and Watlow Anafaze, all in one system. Up to 32 controllers may be connected for simultaneous communications. With easy controller setup, a recipe and alarm manager, data-logging and trend plot graphing capabilities, animated custom overview screens and a superior online help system, you can be assured that WATVIEW is the ideal software for your application.

### WATVIEW Editions:

WATVIEW is available in three editions making your software decision quick and effortless.

- **WATVIEW-RT: The Run-Time Edition**  
Provides all functions including trend plot graphing, setup screens, data-logging, recipe manager with calendar-start, spreadsheet data editor, system activity log, and alarm manager. The Run-Time Edition will "play back" custom screens created with the Developer Edition.
- **WATVIEW-DV: The Developer Edition**  
Includes all functions of the Run-Time Edition plus a custom screen designer and user-defined variables.
- **WATVIEW-CNF: The Configurator Edition**  
Includes only spreadsheet data editor, recipe manager without calendar-start, and system activity log.

### Features and Benefits

#### Easy Controller Setup

- WATVIEW automatically detects which controllers are connected to the computer, then WATVIEW loads the appropriate setup screens for those controllers. Use built-in setup screens to adjust the controller parameters, or the simple "spreadsheet view" for a quick, intuitive interface. The spreadsheet categorizes all controller parameters according to their parameter groupings.

#### Recipe Manager

- All editions of WATVIEW include the ability to create recipes (arrays of controller settings). Recipes can be created, edited, stored and downloaded to the controllers. Use recipes to store commonly used controllers settings, to speed up repetitive controller setups, and to create a "snapshot" of your setups. The Run-Time and Developer Editions also include a calendar-start function, allowing users to automatically download recipes on a one-time or repeating schedule.

*(continued on next page)*



ANA-WTW-30

A subsidiary of Watlow, Designer and Manufacturer of Industrial Heaters, Sensors and Controls

314 Westridge Drive  
Watsonville, California 95076 USA  
Phone: 831-724-3800  
Fax: 831-724-0320  
Internet: [www.anafaze.com](http://www.anafaze.com)  
[www.watlow.com](http://www.watlow.com)



## Features and Benefits (continued)

### Alarm Manager

- WATVIEW receives alarms from the connected controllers, maintains a log of alarms, and allows users to clear and acknowledge alarms while the system is running (Run-Time and Developer Editions only).

### Data-Logging and Trend Plot Graphs

- WATVIEW includes continuous data-logging of the parameters you choose. You can export the collected data to an Excel®-compatible spreadsheet file, or view up to 20 data items on a WATVIEW trend plot graph. With WATVIEW's Run-Time and Developer Editions an unlimited number of graphs may be named and stored for simple future retrieval.

### Colorful, Animated Custom Overview Screens

- Import your own graphics (such as digital camera photos) to create custom screens, easily! WATVIEW Custom Overviews (COVs) incorporate your graphic images with real-time data from the controllers, to make a custom interface. With the Developer Edition, you can use WATVIEW's AnaMator program to create animated sequences, which can show your actual process in action.

### Superior Online Help System

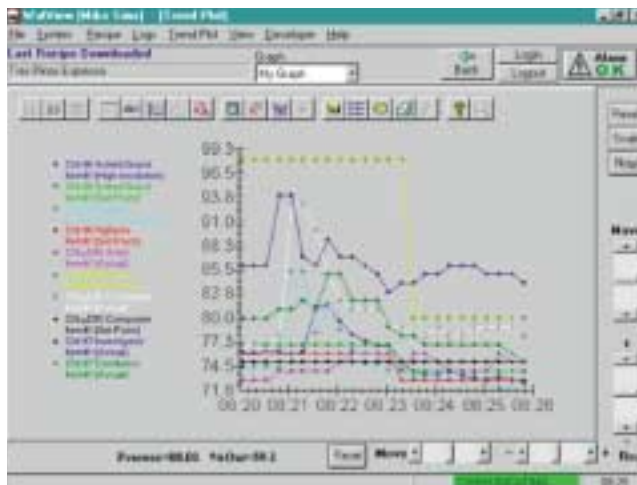
- For the first time in Anafaze's history of software products, WATVIEW does not have a printed manual. The online help system built into WATVIEW has replaced the printed manual, and far exceeds the printed version's capabilities. Use the online help to navigate through setup procedures, obtain specific help for various Watlow controllers, locate context-sensitive help, or search and browse the entire contents. This online help system is a superior feature for HMI software and is included with each edition of WATVIEW.

Excel® is a registered trademark of Microsoft Corporation.

Pentium® is a registered trademark of Intel Corporation.

Windows®95, 98, and NT are registered trademarks of Microsoft Corporation.

Microsoft® is a registered trademark of Microsoft Corporation.



## Specifications

**System Requirements:** The minimum configuration for Windows®95 or 98:

1. Pentium® 200 MHz processor
2. 32 MB RAM
3. 800 x 600 screen resolution
4. 16-bit or higher color palette ("High Color")
5. Communications port capable of 19.2 kbaud (16550 UART)
6. Microsoft®-compatible pointing device (mouse or trackball)
7. High-density floppy drive
8. 200 MB hard drive space
9. CD-ROM drive
10. Windows®95, 98, or NT 4.0 (U.S. versions and settings required)

**Note:** For Windows®NT 4.0, Watlow Anafaze recommends a minimum of 300 MHz processor and 64 MB of RAM.

### Controllers Supported:

WATVIEW supports the following controllers when equipped with the listed firmware revision or later:

- Series 96 (Rev. 1.20)
- Series 96 with ramping (Rev. 1.05)
- Series 97 (Rev. 1.10)
- MICRODIN™ (Rev. 1.01)
- CAS200 (Rev. 2.0)
- F4S/F4D (Rev. 2.06)
- CLS200 Series standard, enhanced, and extruder (Rev. 3.30)
- MLS300 Series standard, enhanced, and extruder (Rev. 3.30)

## Your Authorized Watlow Distributor Is:

**United States Sales Offices:** Atlanta/Greenville, (770)908-9164 • Austin, (512)249-1900 • Charlotte/Columbia, (704)541-3896 • Chicago, (847)458-1500 • Cincinnati, (513)398-5500 • Cleveland, (330)467-1423 • Dallas, (972)422-4988 • Denver, (303)798-7778 • Detroit, (248)651-0500 • Houston, (281)355-6015 • Indianapolis, (317)575-8932 • Kansas City, (913)897-3973 • Los Angeles, (714)935-2999 • Maryland/Virginia, (410)840-8034 • Minneapolis, (612)431-5700 • Nashville, (615)264-6148 • New England, (603)882-1330 • New York/New Jersey/Philadelphia, (215)345-8130 • New York, Upstate, (716)438-0454 • Orlando, (407)351-0737 • Phoenix, (602)708-1995 • Pittsburgh, (412)322-5004 • Portland, (503)245-9037 • St. Louis, (314)878-4600 • Sacramento, (707)425-1155 • San Diego, (760)728-9188 • San Francisco, (408)980-9355 • Seattle, (425)222-4090 • Tampa/St. Petersburg, (813)926-3600 • Tulsa, (918)496-2826 • Winston Salem/Raleigh, (336)766-9659 • Wisconsin, (414)723-5990

**Asian Sales Offices:** Australia, 613-9335-6449 • China, 86-21-6229-8917 • Japan, 81-(03)-5403-4688 • Korea, 82-2-563-5777 • Singapore, 65-777-5488 • Taiwan, 886-7-261-8397

**European Sales Offices:** France, 33-1-3073-2425 • Germany, 49-7253-9400-0 • Italy, 39-2-4588-841 • United Kingdom, 44-115-9640777

**Latin American Sales Office:** Mexico, 52-42-17-6235

**For other product information, call Watlow's FAX REPLY: United States (800)367-0430 • Outside the United States (908)885-6344**